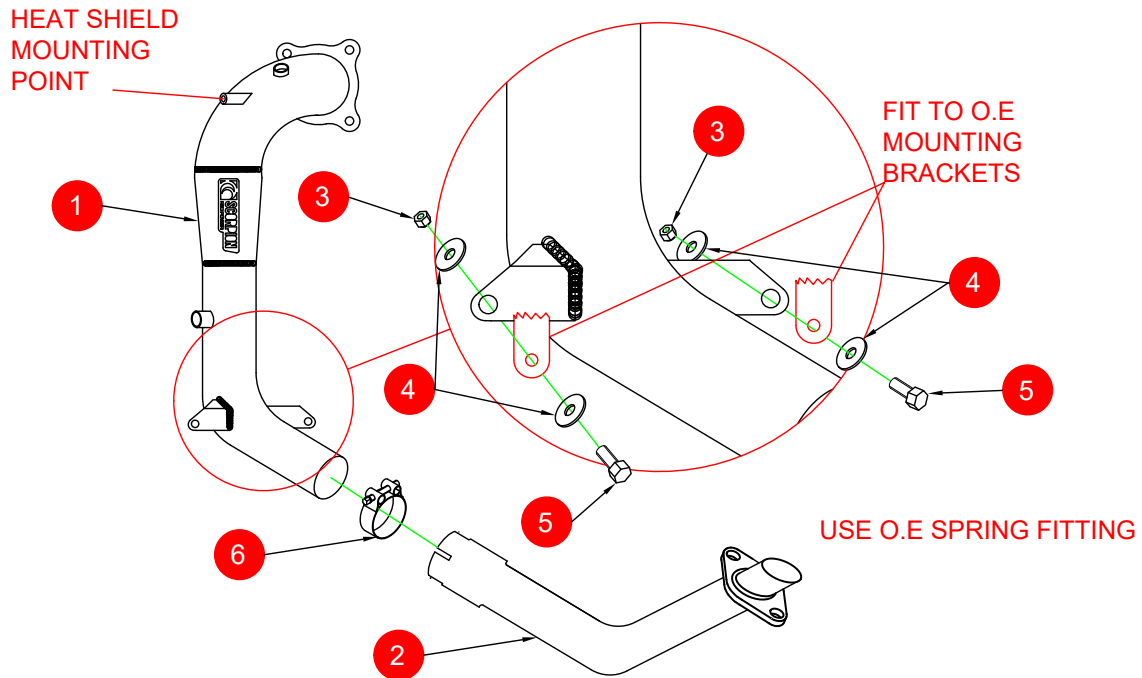


Case 9

CAR	Honda Civic Type R FK2 2.0 Turbo Left Hand Drive	PART NO.	SHDC014
YEAR	2015-2017	FIT KITS	210FK
NOTES	Where not supplied use O.E springs and bolts to fit the Scorpion system.	FEATURES	Pipe diameter:- 70mm/2.75"



NO.	PART NO.	DESCRIPTION	QTY
1	233HA	De-cat Downpipe	1
2	245HA	Left Hand Drive Link Pipe	1
Fit Kit			
3	Z017.10063	M8 Nut	2
4	Z017.10825	M8 x 25mm Washer	4
5	Z017.10043	M8 x 16MM Hex Head Bolt	2
6	Z016.10063	Heavy Duty Clamp	1

CLASSIFICATION	Motorsport Use Only
HOMOLOGATED	No
DATE	13/05/16
ISSUE	01
AUTHORISED	M.YDLIBI

NOTE: ENSURE SCORPION SYSTEM IS CLEAR OF MOVING PARTS AND ALL ORIGINAL FUNCTIONS WORK CORRECTLY.

Checked By _____

